



USAID | WINNER
FROM THE AMERICAN PEOPLE
WATERSHED INITIATIVE FOR NATIONAL
NATURAL ENVIRONMENTAL RESOURCES

Annual Review

October 2010 – September 2011

November 9th 2011



WINNER Results Framework in FY 2011

- Key result areas:
- Livelihoods of people living in target watersheds improved through increased agricultural productivity and alternate income generation
- Critical infrastructure rebuilt and improved and threat of flooding reduced
- Watershed governance strengthened
- Public-private partnerships established



USAID | WINNER

FROM THE AMERICAN PEOPLE

WATERSHED INITIATIVE FOR NATIONAL
NATURAL ENVIRONMENTAL RESOURCES



WINNER PROJECT AREA OVERVIEW



Scale 1:120,000



Zones of Intervention

- On-going WINNER activities Area
- Area with few activities remaining
- Commune
- Secteur
- Department

Roads

- National
- Departmental
- Communal
- Other roads

Altitude (m)



Coordinate Reference System: UTM Zone 18N
Datum: WGS84
Datum: CGCS2011, UTM (China), Contour: 100M
Projection: UTM
Map Number: 100011_C000000_001_100011





Key results - livelihoods

- Completed the Bas Boen CRDD
- Trained nearly 4000 master farmers (638 graduated)
- Implemented the 2010 winter bean campaign on 1,912 hectares
- Implemented the 2011 spring agricultural campaign on 7,135 hectares
- Agricultural campaigns generated \$17 million in gross margins for farmers
- Transplantation of 1.55 million tree seedlings for the benefit of nearly 15,000 small farmers



Results of the 2010 winter bean campaign

Zone	Area (ha)	Production (MT)	Total cost of production (gourdes)	Total sales (gourdes)	Total gross margin (gourdes)	Total gross margins (\$US)
Cul-de-Sac –	700	939	14,549,612	60,014,607	45,464,995	\$1,136,625
Matheux	487	336	5,685,360	20,142,540	14,457,180	\$361,430
Mirebalais	725	1,003	17,880,891	60,191,484	42,310,593	\$1,057,765
TOTAL	1,912	2,278	38,115,863	140,348,631	102,232,768	\$2,555,819



USAID | WINNER

FROM THE AMERICAN PEOPLE
WATERSHED INITIATIVE FOR NATIONAL
NATURAL ENVIRONMENTAL RESOURCES

Spring 2011 agricultural campaign (summary)

Region	Area (hectares)	Number of farmers	Total production (MT)	Total sales (gorudes)	Gross margin (gourdes)	Gross margin (\$)
Cul-de-Sac plain	2,921	1,962	7,839	146,282,900	76,285,227	\$1,907,131
Kenscoff/ Pétionville	750	1,050	6,070	209,083,530	180,176,506	\$4,504,413
Matheux corridor	1,605	2,810	11,014	294,281,280	260,189,445	\$6,504,736
Mirebalais / Saut d'Eau region	1,859	2,928	2,931	88,420,440	59,944,068	\$1,498,602
Total	7,135	8,750	27,856	738,068,150	576,595,246	\$14,414,881



USAID | WINNER

FROM THE AMERICAN PEOPLE

WATERSHED INITIATIVE FOR NATIONAL
NATURAL ENVIRONMENTAL RESOURCES

Bas Boën CRDD



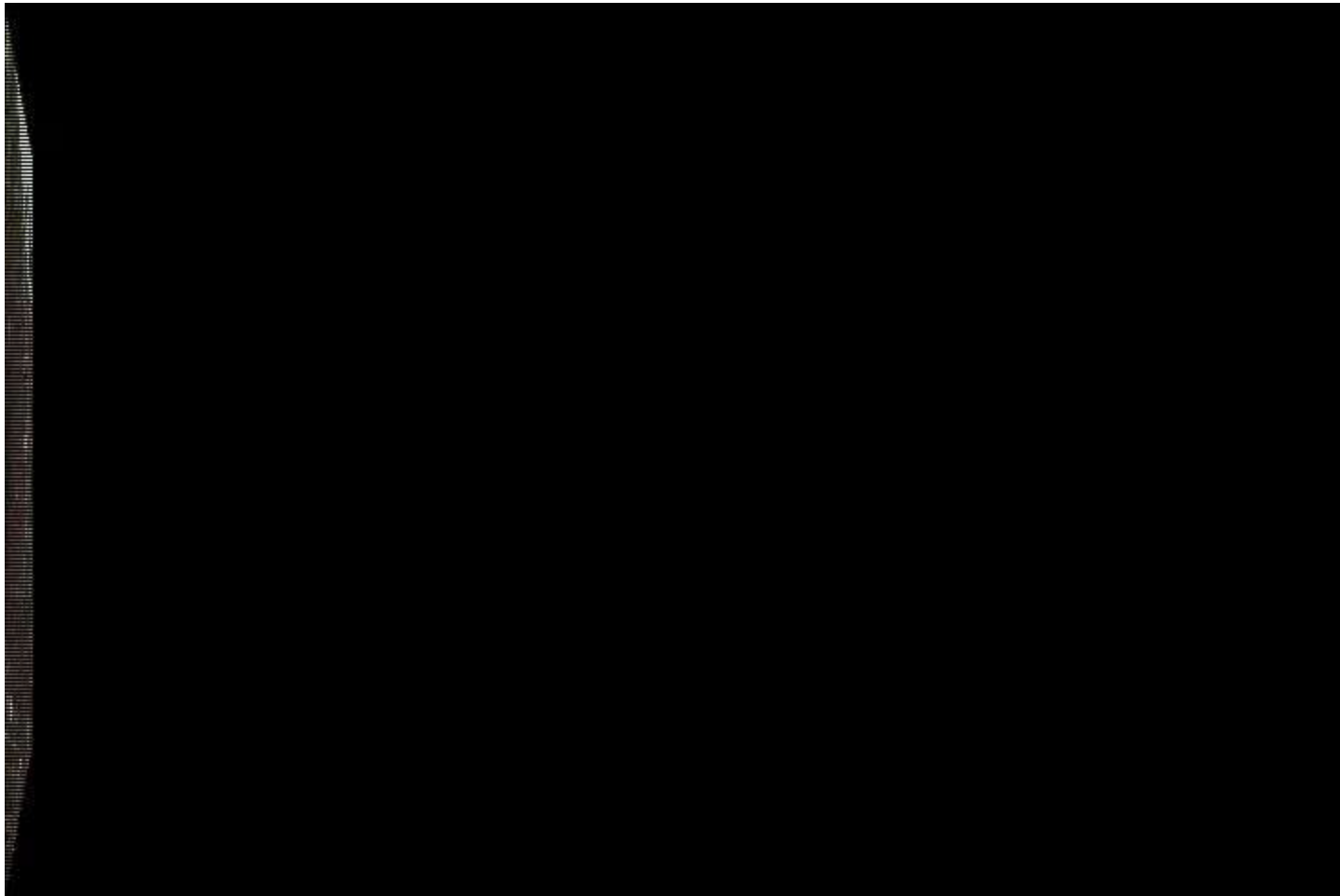


USAID | WINNER

FROM THE AMERICAN PEOPLE

WATERSHED INITIATIVE FOR NATIONAL
NATURAL ENVIRONMENTAL RESOURCES

Kenscoff CRDD





Training summary

- 638 master farmers graduated (26% women)
- Nearly 4,000 master farmer candidates trained





Technological innovation

- Vertical agriculture
- Drip irrigation
- SRI
- Extension services by SMS
- Plant diagnostics laboratory
- Soil analysis and mapping
- Biodigester
- Urea briquettes





USAID | WINNER

FROM THE AMERICAN PEOPLE

WATERSHED INITIATIVE FOR NATIONAL
NATURAL ENVIRONMENTAL RESOURCES

Examples of modern technologies





USAID | WINNER

FROM THE AMERICAN PEOPLE

WATERSHED INITIATIVE FOR NATIONAL
NATURAL ENVIRONMENTAL RESOURCES





Key results: infrastructure

- Completion of the La Quinte river bank widening and strengthening (peak flow of 500 m³/s)
- Ravine stabilization (17 ravines treated (6,374 meters) with 11,712 m³ of dry stone walls and gabions)
- River bank stabilization of three rivers (Courjolle, Torcelle, Manègue) in the Matheux region (447 meters of gabions installed on river banks)
- Rehabilitation of potable water systems for 75,000 people
- Rehabilitation of the Fonds Baptiste road on 17.2 kilometers



USAID | WINNER

FROM THE AMERICAN PEOPLE

WATERSHED INITIATIVE FOR NATIONAL
NATURAL ENVIRONMENTAL RESOURCES





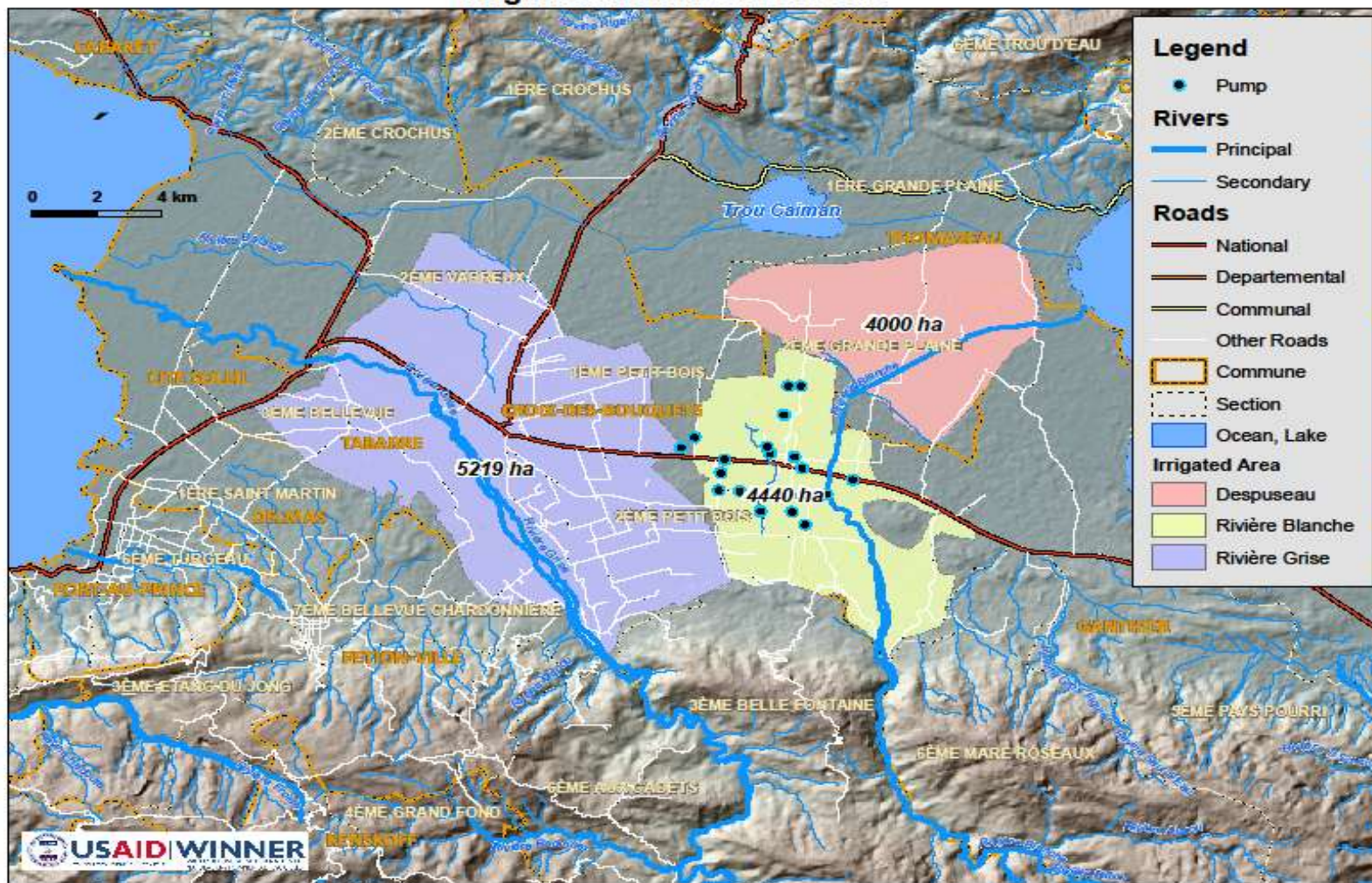
Rehabilitation of irrigation and drainage systems in the Cul de Sac plain

- Rehabilitation of the Rivière Blanche irrigation system (3.000ha):
Inauguration on November 15th
- Clearing of 40 kms of primary canals and 100 km of secondary canals of the Rivière Grise irrigation system (4,500 ha):
- Of 19 pumps in the Cul-de-Sac aquifer system, 8 were defective and 7 have been rehabilitated by WINNER
- Rehabilitation of the Bas Boen thermal power plant underway (1MW):
Inauguration in January 2012
- Clearing of irrigation canals of Source Zabeth irrigation system (1,000 ha)



Potential for irrigated perimeters in the Cul de Sac plain

Irrigated Area of Cul-de-Sac





Key results - Governance

- Creation of the water users association of the Riviere Grise irrigation system
- Transfer of five seismometers to the Bureau of Mines and Energy in collaboration with USGS
- Strategy for Cul-de-Sac watershed management plan showing 17,000 hectares cultivated and 5,000 in fallow
- Review of priority application decrees from the 2006 framework law on environment
- Support for ANAP (Agency for Protected Areas)
- Deployment of wardens in Parc La Visite
- Disaster contingency plans completed for Ganthier and Thomazeau



USAID | WINNER

FROM THE AMERICAN PEOPLE WATERSHED INITIATIVE FOR NATIONAL
NATURAL ENVIRONMENTAL RESOURCES

2002

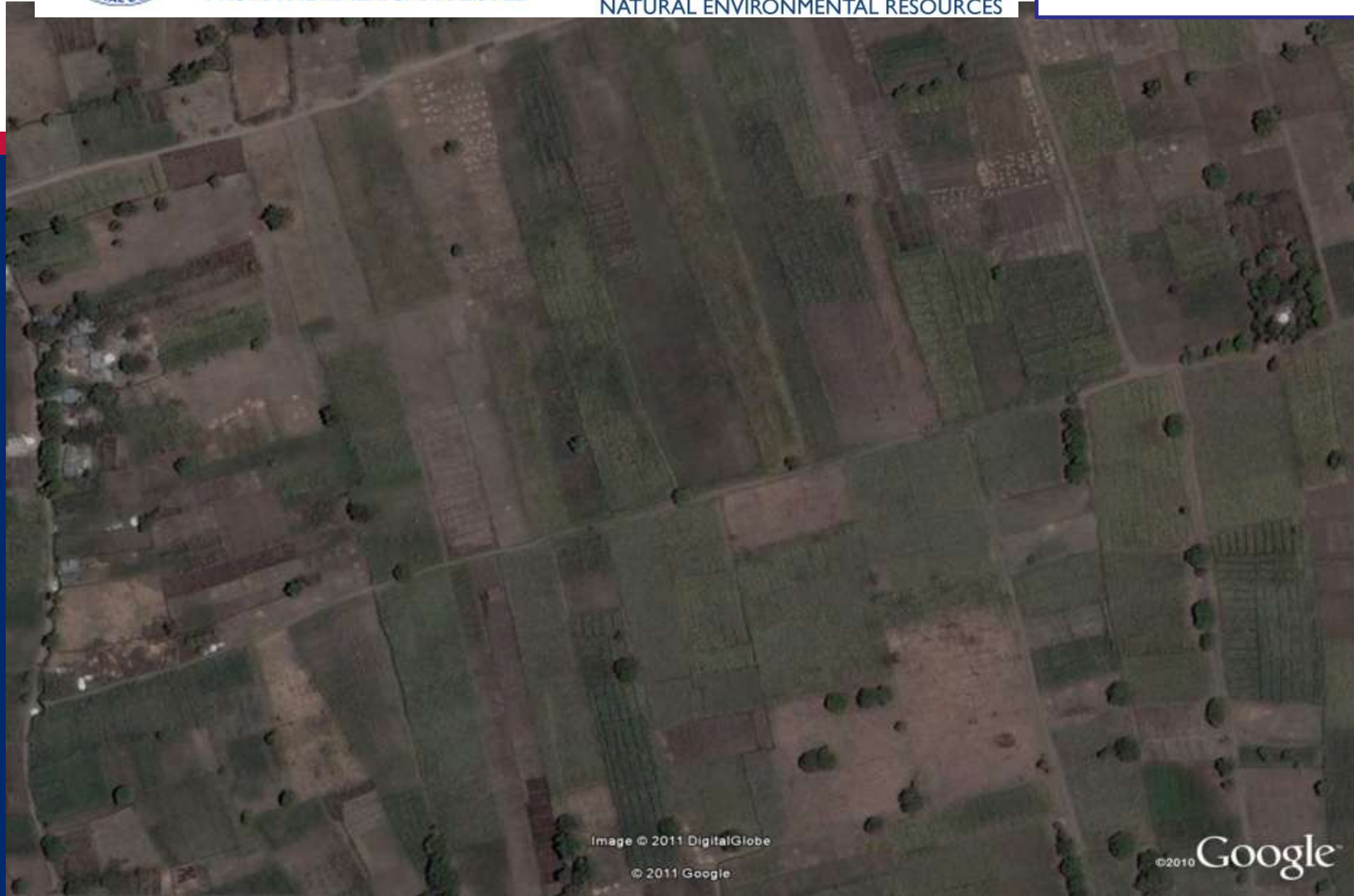


Image © 2011 DigitalGlobe

© 2011 Google

©2010 Google



USAID | WINNER

FROM THE AMERICAN PEOPLE

WATERSHED INITIATIVE FOR NATIONAL
NATURAL ENVIRONMENTAL RESOURCES

2006



Image © 2011 DigitalGlobe

© 2011 Google

© 2010 Google

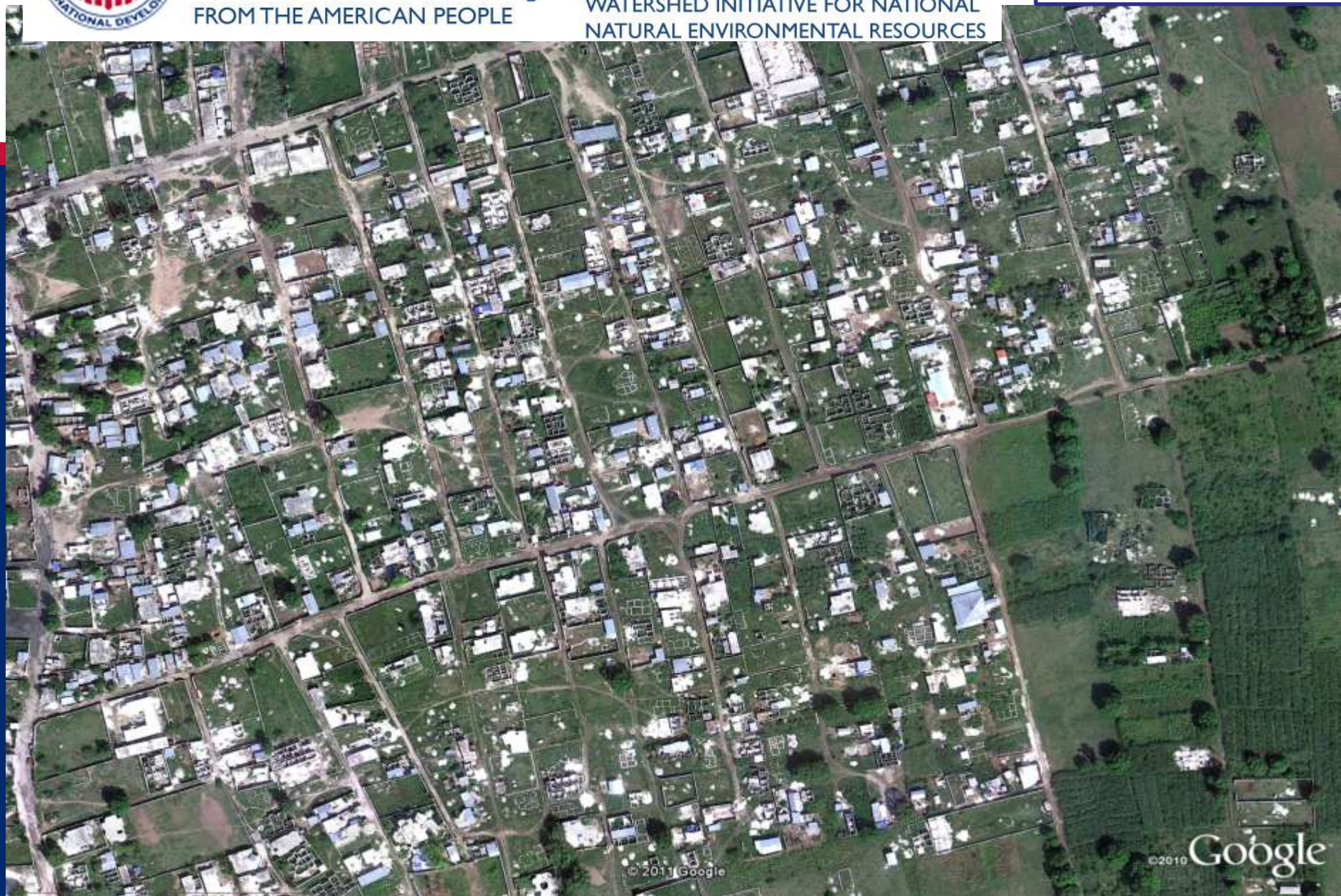


USAID | WINNER

FROM THE AMERICAN PEOPLE

WATERSHED INITIATIVE FOR NATIONAL
NATURAL ENVIRONMENTAL RESOURCES

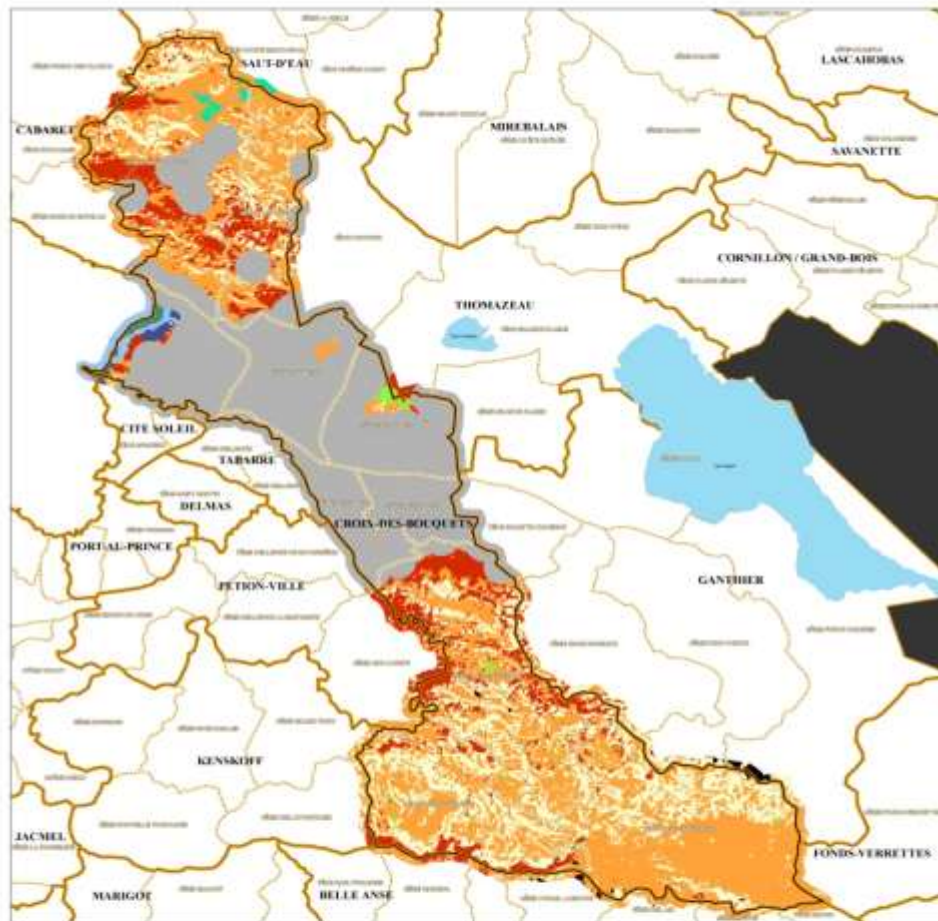
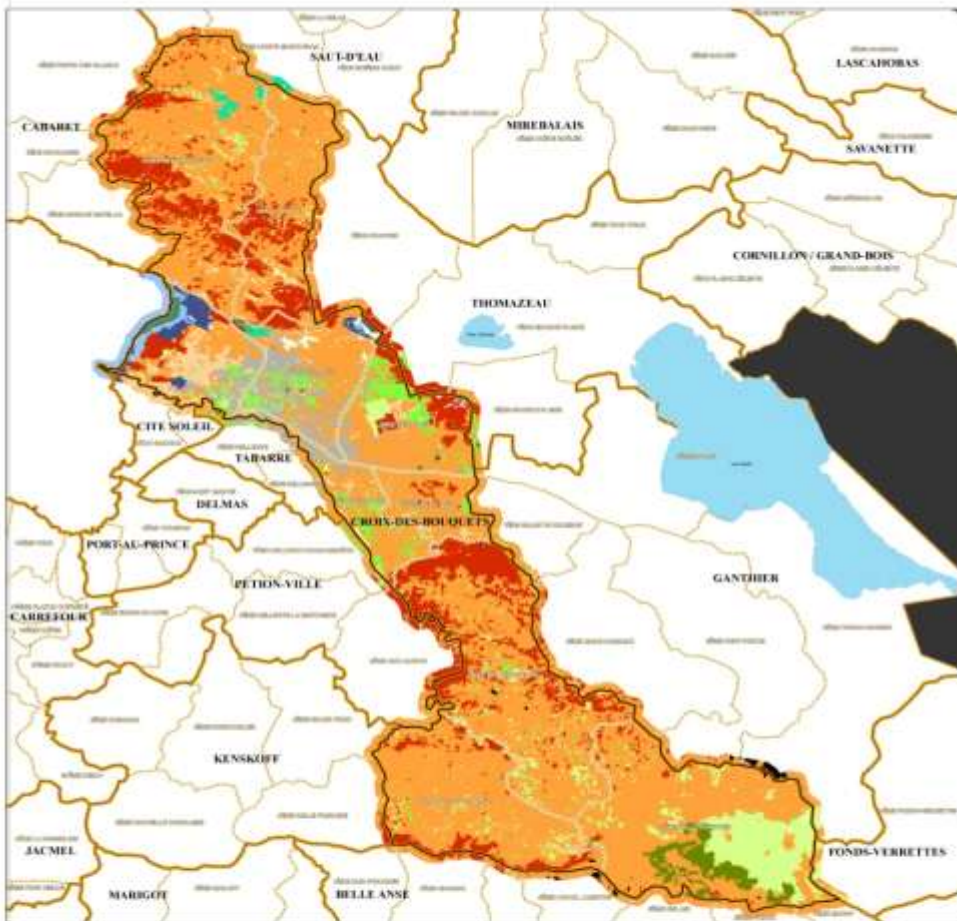
2010



Evolution du mode d'occupation des sols: Commune de Croix des Bouquets

Mode d'occupation de sol 2010

Mode d'occupation futur des sols sans regulation



Légende

Section Communale

Commune

Mode d'Occupation de Sols

Zone Urbaine ou Bâtie

Forêt

Eau

Zone sans Végétation

Mérisages non Forestiers

Zone non Classée (Rueges ou Ombre Neugees)

Terre Agricole Irrigable

Cultures Pérennes non Arborescentes

Cultures Annuelles

Systèmes agro-forestiers non-denses

Systèmes Agro-forestiers Partiellement Couverts

Systèmes Agro-forestiers Denses

Surfaces en jachère

Mangroves



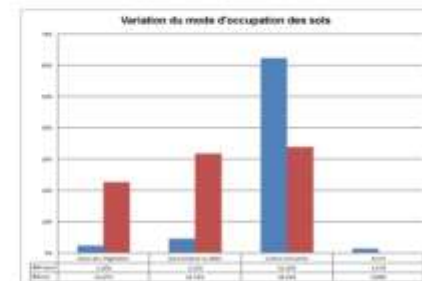
1:100 000

0 4 400 8 800 13 200 17 600 (m)

USAID:WINNER

Document Révisé le 15/05/2010
Projet: 2005-2008, 2009-2010
Phase: 1/2010
Rédacteur: [Nom non lisible]
Approuvé: [Nom non lisible]

Mode d'occupation des sols	Superficie	Pourcentage
Forêt	11 200	11,2%
Zone Urbaine ou Bâtie	1 100	1,1%
Zone sans Végétation	1 100	1,1%
Surfaces en jachère	1 100	1,1%
Eau	1 100	1,1%
Terre Agricole Irrigable	1 100	1,1%
Cultures Annuelles	1 100	1,1%
Systèmes Agro-forestiers non-denses	1 100	1,1%
Systèmes Agro-forestiers Partiellement Couverts	1 100	1,1%
Systèmes Agro-forestiers Denses	1 100	1,1%
Mérisages non Forestiers	1 100	1,1%
Surfaces non Classées	1 100	1,1%
Mangroves	1 100	1,1%
Zone non Classée (Rueges ou Ombre Neugees)	1 100	1,1%
Total	100 000	100%





Key results - PPPP

- Mango value chain
- Corn value chain
- Rice value chain
- Poultry value chain
- Fresh cut flowers
- Sugar cane value chain
- Jathropha & biodiesel





USAID | WINNER

FROM THE AMERICAN PEOPLE

WATERSHED INITIATIVE FOR NATIONAL
NATURAL ENVIRONMENTAL RESOURCES



Support to the mango value chain:

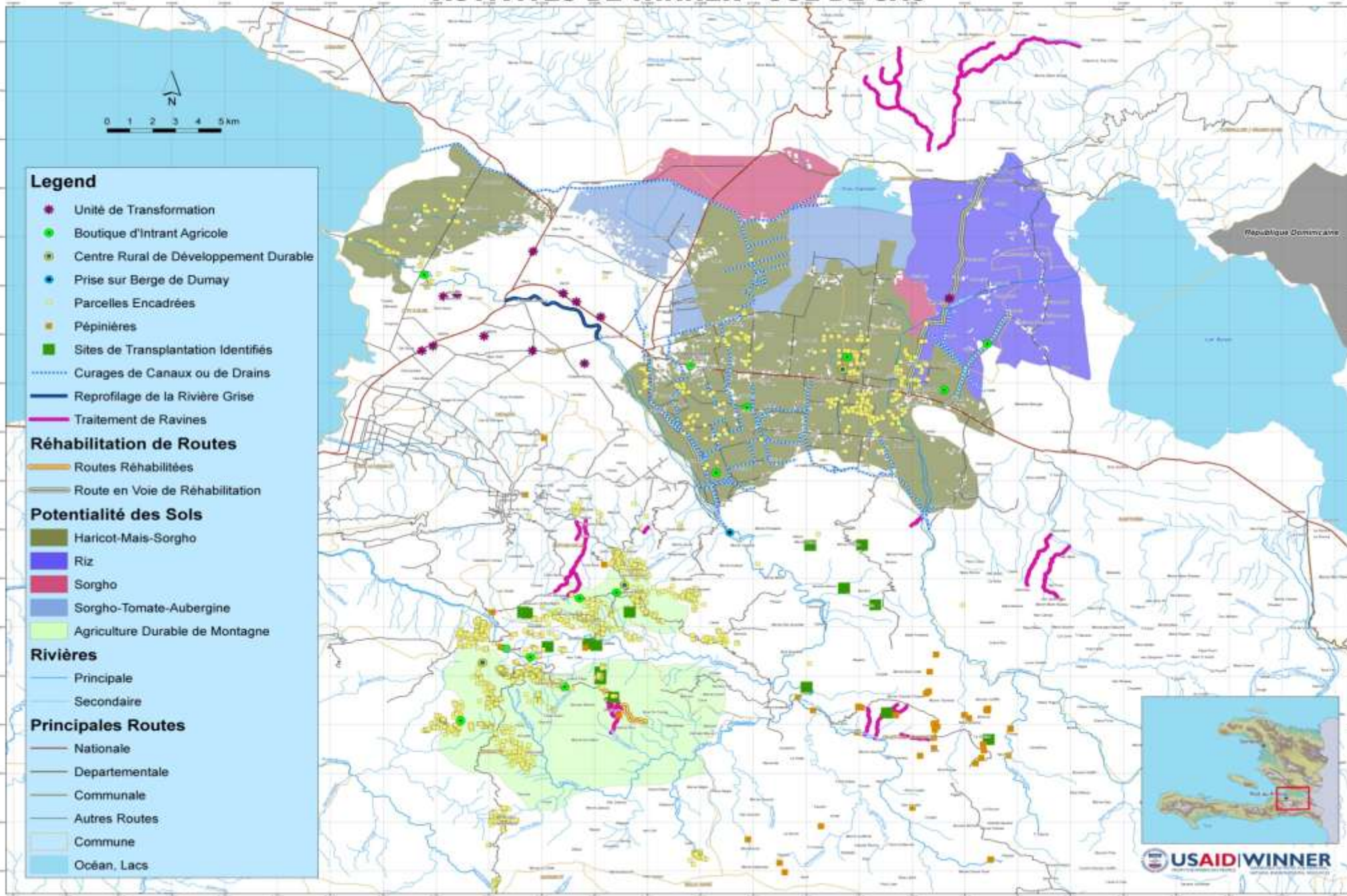
- Mobile collection centers and plastic crates
- Reduction of post-harvest losses by 20% in 2011 in the Mirebalais / Saut d'Eau region
- Plantation of mango francisque
- Financial and technical assistance for mango processing facilities
- Working with ANEM on the implementation of a traceability system



Support for commercialization

- WINNER is linking producers with buyers
- Partnership between rice producers and the private sector
- MOU between Matheux producers and the Arcadin coast Hotel Association
- Deals between producers and hotels, restaurants and supermarkets resulting from Food Expo

ACTIVITES DE WINNER - CUL DE SAC



ACTIVITES DE WINNER - CORRIDOR DES MATHEUX





Key events

- Inauguration of Bas Boen CRDD
- Visit of Administrator Shah to Bas Boen
- SRI conference with Better U Foundation
- Participation at E2Tech
- Participation in Food Expo





Project level activities

- Scholarship program at the University of Florida
- Small Business Recovery Initiative (SBRI)
- Alternative energy
- Creation of 214 CHANPYON associations regrouping more than 50,000 farmers



Alignment with the new USAID strategy

- WINNER phased out of Gonaives
- New focus on the economic corridor and Feed the Future approach
- Focus on targeted value chains
 - Corn, rice and beans in the Cul-de-Sac corridor
 - Corn, plantain and beans in the Matheux corridor
- Mango value chain as export crop
- Emphasis on post-harvest operations
- New work plan reflecting these changes



The Road Ahead: Key Technical Issues in partnership with the UF

- Identify sustainable rotations with increased organic matter
- Improve control of gravity irrigation water
- Improve post harvest operations for priority value chains
- Set up packing centers for fruits and vegetables
- Build up the capacity of CRDD laboratories
- Introduce new varieties of maize, beans, fruits and vegetables
- Set up the distance learning operation
- Perform HACCP missions for mango exporters